



NRP
Anaxo

NRP Anaxo Nordic m2

27.11.2025

DISCLAIMER

This presentation (the "Presentation") is issued on a confidential basis to a limited number of investors for the sole purpose of providing certain information about a prospective investment in a Norwegian securities fund and AIF structure to be established (the "Fund" or "NRP Anaxo Nordic m2"). Professional and Norwegian non-professional investors (as defined in the EU's Alternative Investment Fund Management Act of 12 July 2013 (the "AIFM Act")) will be permitted to invest in the Fund. Investors in need of Investment Advisory services in order to invest in the Fund may be permitted to invest subject to suitability assessments in accordance with existing MiFID regulations.

Information contained in this Presentation concerning the various agreements that will be entered into in connection with the Fund is not exhaustive and must be read in conjunction with the relevant agreements. In case of any conflict between information set out herein and the text of such agreements, the text of such agreements shall prevail. Potential investors are therefore encouraged to review the agreements related to the Fund prior to making a decision to invest in the Fund.

This Presentation does not constitute and under no circumstances shall this Presentation be deemed or construed to be a prospectus, an offer to sell, or the solicitation of an offer to buy or subscribe for any security or other financial instrument or for investment management or advisory services. This Presentation does not constitute investment advice, an investment recommendation, an investment analysis or similar. Hence, it is not prepared in accordance with such rules and regulations. No determination has been made regarding the suitability or otherwise of any securities, financial instruments or strategies for particular investors. The information contained herein is provided on the basis and subject to the explanations, caveats and warnings set out in this disclaimer. In considering the past performance information contained herein, recipients should bear in mind that past performance is not indicative of future results and there can be no assurance that comparable results or returns will be achieved in the future.

The material in this Presentation is intended to be current as per the date of this Presentation and is obtained from various sources that are believed to be reliable. While all reasonable care has been taken to ensure that the material is true and not misleading, no guarantee about its accuracy or completeness is made. This Presentation does not take into account the specific financial situation or the particular needs of any specific person. Investors are also cautioned that any forward-looking statements are based on assessments, are not guarantees of future performance, and are subject to risks and that uncertainties and the actual results, performance or achievements may differ materially from those expressed or implied by the forward-looking statements as a result of various factors. Factors that could cause or contribute to such differences include, but are not limited to, those described in this Presentation. Under no circumstance does NRP Anaxo Management AS or any of its affiliates accept any responsibility for any forward-looking statements, assumptions or similar information contained herein.

Neither NRP Anaxo Management AS, nor any of its affiliates, directors, officers, employees, agents, service providers, advisors or representatives, or customers (each a "Relevant Party") make any representation, warranty or undertaking, express or implied, as to the accuracy, completeness or correctness of the information contained herein. Furthermore, in no event will any Relevant Party have any liability whatsoever to any recipient for any loss or damage of any kind or for any other consequence of any decision of whatever nature which is in any way based on information in this Presentation.

The attention of prospective investors is drawn to the fact that an investment in the Fund involves a high degree of risk and is suitable only for investors who are sophisticated concerning financial matters and familiar with the risks associated with investments similar to the ones described herein. Investors should seek independent financial, accounting, regulatory, tax, and legal advice regarding the consequences of investing in the Fund.

This Presentation is only intended for the recipients, and this Presentation and any other information regarding the Fund must not be copied, distributed or disclosed to any party (except to the recipient's professional advisers) by the recipient, and must not be used for any purpose other than considering an investment in the Fund. In the event that the recipient has no further interest in participating in the Fund, or if so, requested by NRP Anaxo Management AS, the recipient will return all information regarding the Fund to NRP Anaxo Management AS at its earliest convenience.

This Presentation has not yet been approved by or been registered with any regulatory authority. NRP Anaxo Management AS does not accept any form of liability for the information contained herein or any loss resulting from such information being misleading, incorrect or incomplete, or any other loss resulting from an investment in the Fund.

This Presentation is not to be distributed to investors in the US, Canada, Hong Kong, Australia, Japan, Russia, Bermuda or other jurisdictions where it would be contrary to relevant securities law. Any disputes regarding this Presentation is subject to Norwegian law and shall be subject to Norwegian courts' exclusive jurisdiction, unless otherwise explicitly stated.

NRP Anaxo Management AS has no responsibility to update or supplement this presentation following the date of this Presentation.

NRP Anaxo Management AS and/or any of its affiliates and employees may hold shares, options or other securities of any issuer referred to in this document, and may, as principal or agent, buy or sell such securities. NRP Anaxo Management AS may have other financial interests in transactions involving these securities.

IMPORTANT NOTICE

Potential investors in the Fund may not subscribe for shares in the Fund based on the information described herein. Subscriptions can solely be made based on the formal information presented in the Fund's prospectus, KIID, AIF-information document and other formal subscription documents. Investors interested in subscribing for shares in the Fund may receive complete subscription information upon request to the Fund's distributor, NRP Project Finance AS (the "Distributor").

Investing in the Fund is associated with high risk. Investors subscribing for shares in the Fund must be aware of the risk of losing part of or the entire invested amount. NRP Anaxo Management AS (the "Fund Manager") or any of its affiliates cannot guarantee the value of an investment going forward. Please see a detailed description on relevant risk factors in the appendix.

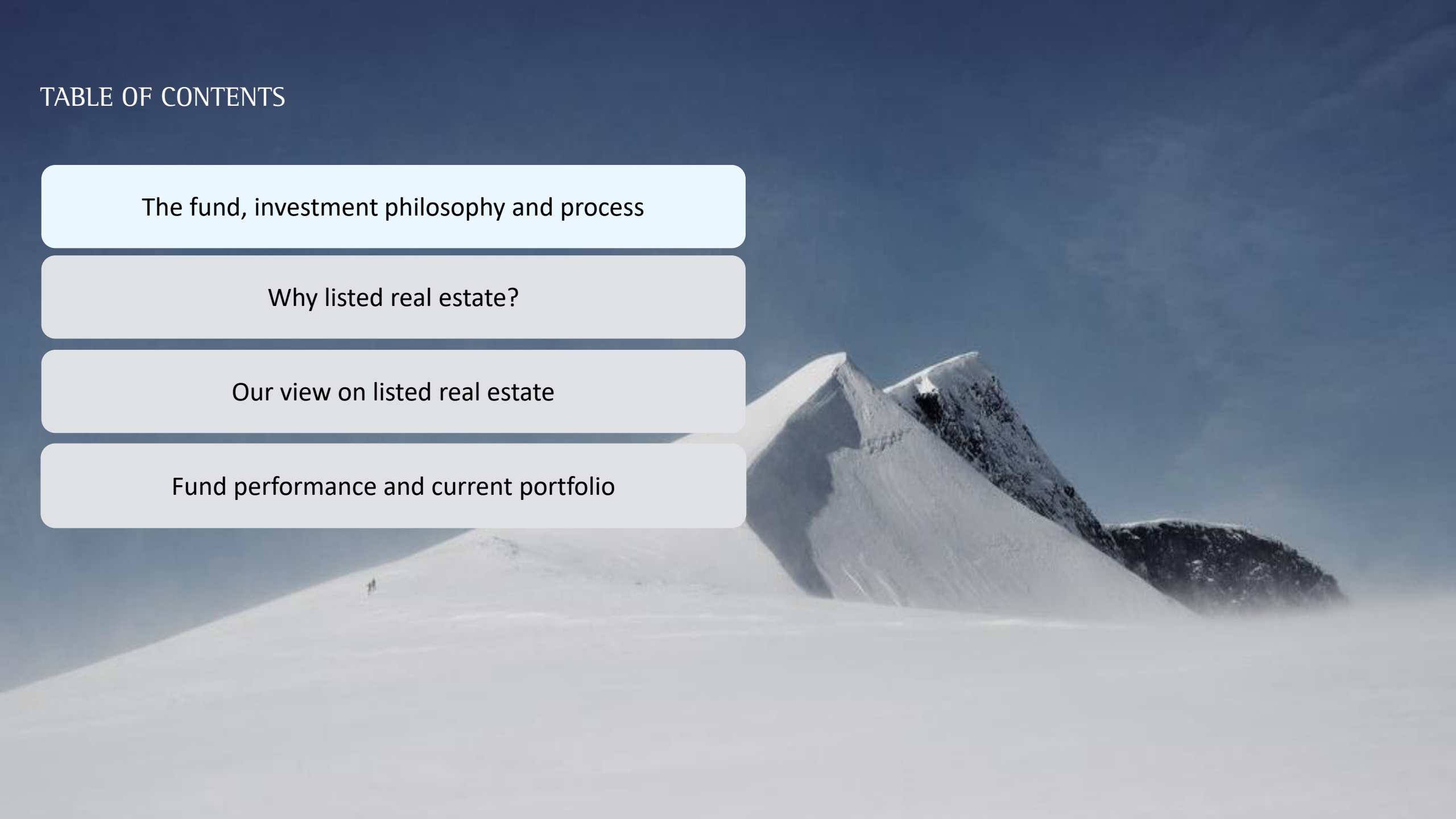
TABLE OF CONTENTS

The fund, investment philosophy and process

Why listed real estate?

Our view on listed real estate

Fund performance and current portfolio



AT A GLANCE: NRP ANAXO NORDIC M2

Key fund characteristics



- NRP Anaxo Nordic m2 – an **Alternative Investment Fund (AIF)** and Norwegian Domestic Fund managed by NRP Anaxo Management



- Focus on **listed real estate** securities in the Nordics
 - Enabling a liquid and diversified exposure to real estate investments



- The fund structure and investment mandate enables **active management** and ability to **take meaningful investment decisions**

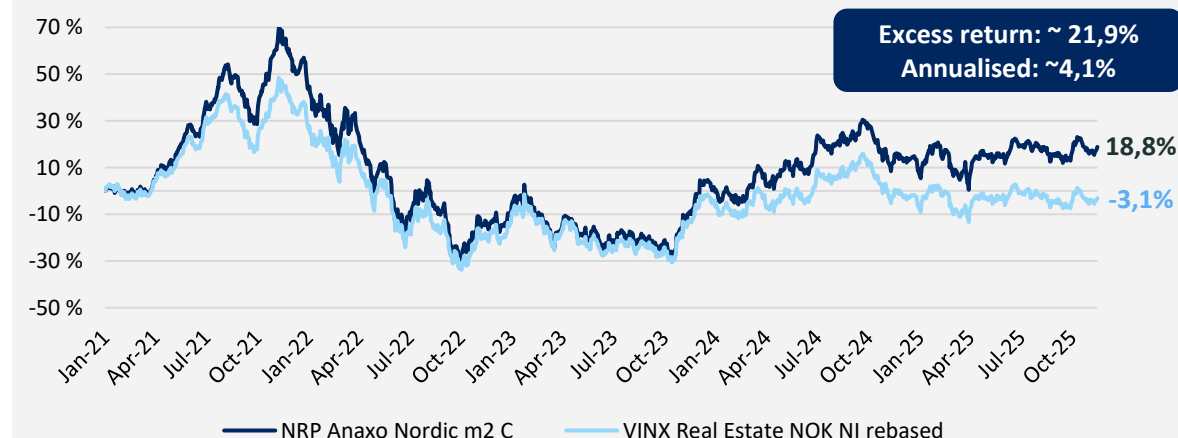


- Long term** investment focus throughout the fund
 - Minimum subscription of NOK/SEK 2 000 000, NOK/SEK 10 000 000 or NOK/SEK 40 0000¹
 - Monthly liquidity

Investment mandate and allocation guidelines

- Listed Nordic real estate securities**
 - Up to 100% of the Fund can be invested in listed Nordic real estate securities
- Listed European real estate securities**
 - Max. 20% of the Fund can be invested in European real estate securities
- Pre IPOs**
 - Up to 20% of the Fund can be invested in non-listed real estate companies with firm intentions of going public within 12 months
- Exposure guidelines**
 - Max. 10% of the Fund can be invested in a single company
 - Max. ownership of 20% of share or voting capital in a single company

Return vs benchmark since inception²



INVESTMENT PHILOSOPHY

Active Management



- › We **actively** select stocks we believe will outperform benchmark. Company size and its index weight is not important.

Long-term Investors



- › We are patient and **long-term** investors in companies with a positive and sustainable profit development.

Predictability



- › We prioritise companies that have an ability to deliver **inline with or above stated goals**.

Value creating companies



- › We invest in companies with a proven ability to create shareholder value through **profitable growth**.

INVESTMENT MANAGER

Strong composition of real estate and financial expertise



Peter Norhammar

- Joined NRP Anaxo Management in 2020
- Was responsible manager for **Länsförsäkringar Fastighetsfond (2016-2020)** and **Länsförsäkringar Fastighet Europa (2018-2020)** prior to joining NRP.
 - Länsförsäkringar Fastighetsfond exceeded its benchmark index with approx. 30% and Länsförsäkringar Fastighet Europa's return was approx. 17% ahead of its benchmark index after 2 years.
 - Combined, the funds had an AUM of ca. SEK 25bn while Norhammar was manager.
- Previous roles:
 - include Head of Swedish Equities at **Alfred Berg Asset Management (2014-2016)** and simultaneously managing **Länsförsäkringar Fastighetsfond (2015-2016)** and being the responsible manager for **Alfred Berg Fastighetsfond Norden (2014-2016)**.
 - **Chief Investment Officer for Swedish Equities at SEB Investment Management.** While at SEB, he also managed **SEB Fastighetsfond (2000-2006)**, **Ethos Aktiefond (2006-2007)**, **SEB Sverigefond (2007-2013)** and **SEB Swedish Focus Fund (2011-2013)**.
- Norhammar holds a Master of Science in Real Estate Economics from KTH Royal Institute of Technology in Stockholm. Furthermore, he is a Certified European Financial Analyst (CEFA) from the Stockholm School of Economics.

2020



Länsförsäkringar Fastighetsfond A

Winner of the Lipper Fund Awards for best performing fund in the "Equity Sector Real Estate Europe" during the past 3, 5 and 10 years

2019



Länsförsäkringar Fastighetsfond A

Winner of the Lipper Fund Awards for best performing fund in the "Equity Sector Real Estate Europe" during the past 5 and 10 years

2000 - 2006



SEB Fastighetsfond

Awarded with highest rating (five stars) in Morningstar

JUNIOR INVESTMENT MANAGER



Jacob Grouff Horn

Junior Investment Manager – NRP Anaxo Management AS

- Mr. Horn joined NRP Anaxo Management in August 2021 and is responsible for the operations of NRP Anaxo Nordic m2 and supporting the management of the fund.
- Prior to joining NRP Anaxo Management, he worked as an analyst in DNB Markets Investment Banking Division and has broad experience from various sectors, equity capital markets, debt capital markets and M&A. Mr. Horn has also worked in the Norwegian Army as a platoon sergeant.
- Mr. Horn holds a Master of Arts with Honours in Business and Accountancy from The University of Edinburgh Business school, as well as having graduated the Norwegian Army's Non-Commissioned Officer's Academy.

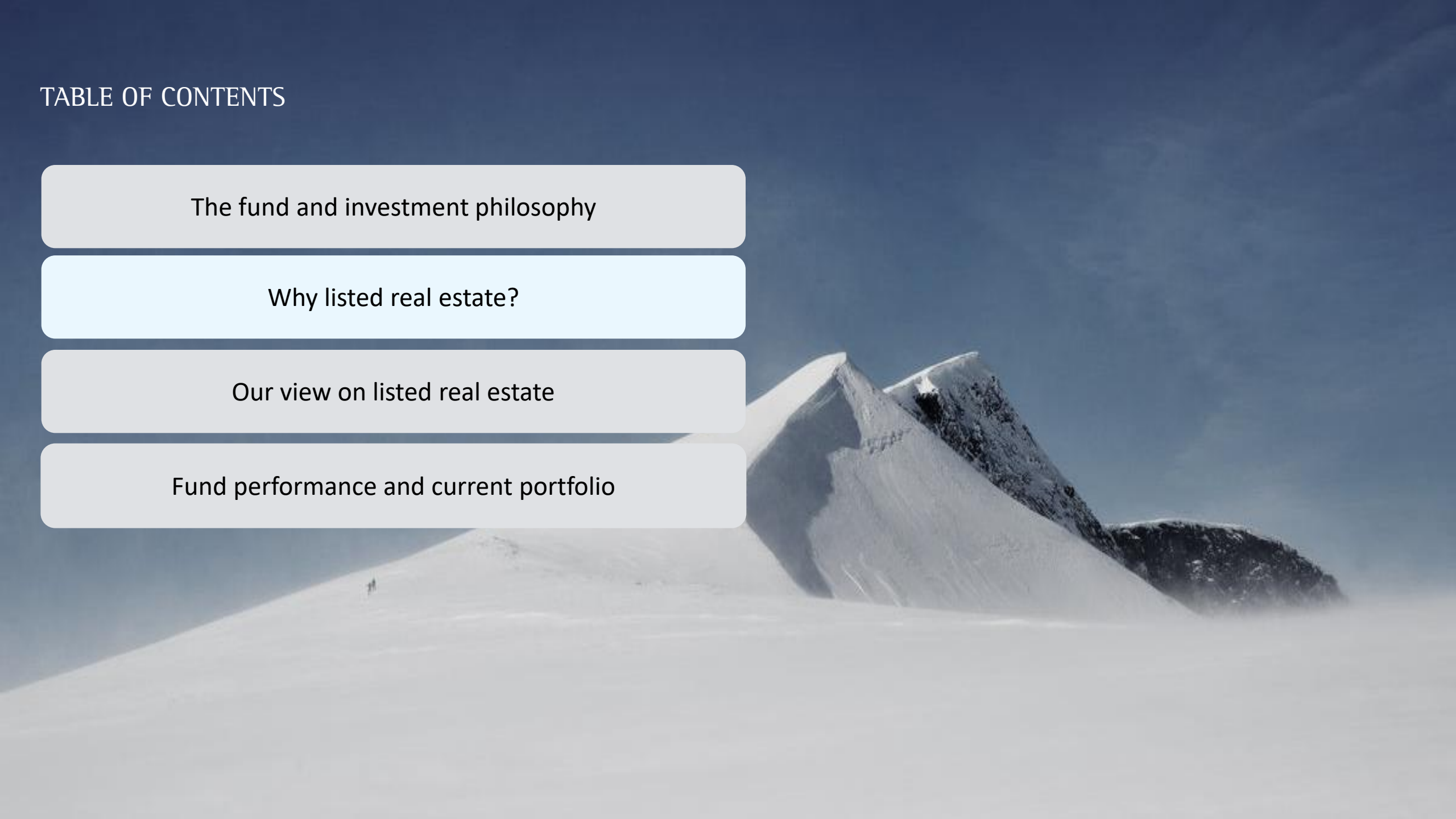
TABLE OF CONTENTS

The fund and investment philosophy

Why listed real estate?

Our view on listed real estate

Fund performance and current portfolio



WHY REAL ESTATE?



Stable and growing rental income

Robust rental income in all economic cycles due to long contract durations and diversified tenant base



Real assets giving inflation protection

Built-in inflation hedges in the lease contracts creates real value stability



Attractive supply- demand fundamentals

Rapid population growth and urbanisation trends increases demand for space

WHY INVEST IN A LISTED REAL ESTATE FUND?



Investing in value creating companies

The fund invest in real estate companies. Most of them have a critical size enabling value creation through: Strong market position, project development, M&A, property management and access to favourable financing



Diversified and large investable universe

The fund can invest across geographies, segments, tenants and business models within the real estate universe



Liquid exposure to real estate

Liquid exposure to real estate both for the investor in the fund and for the fund itself as it is cheap to change exposure within the space quickly

REAL ESTATE EXPOSURE THROUGH NRP ANAXO NORDIC M2

Portfolio exposure to:

>7 000

Properties in the portfolio

>2,8m

Square meters of lettable area

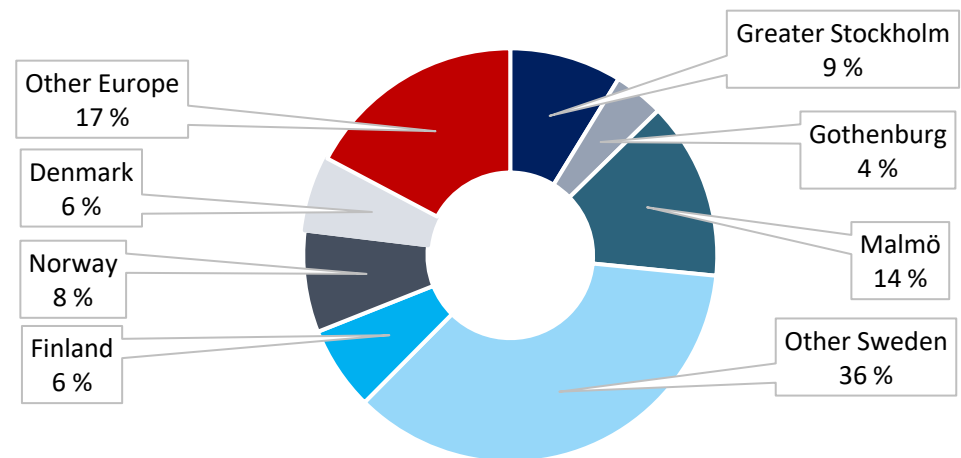
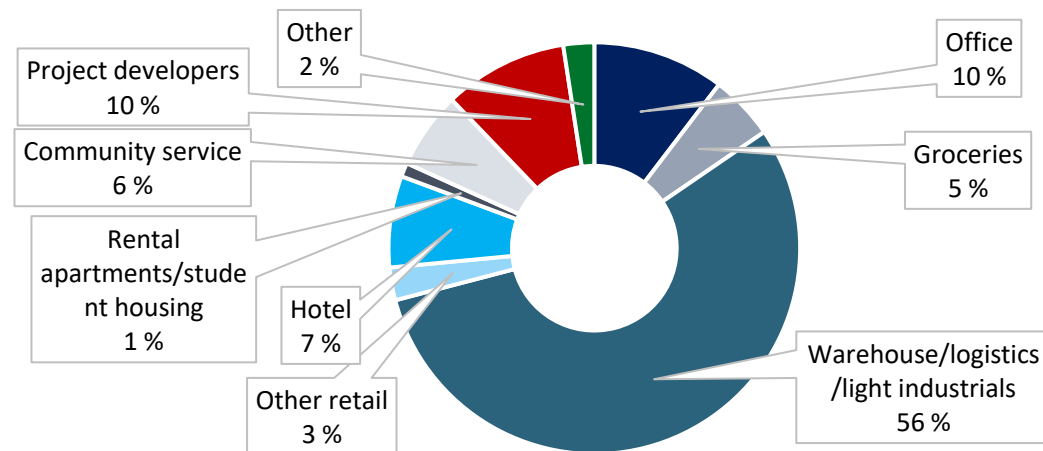
>68 000

Lease contracts

94 %

Occupancy rate

Segment and geographic exposure



LISTED REAL ESTATE VS DIRECT REAL ESTATE INVESTMENTS

	Listed real estate investment	Direct real estate investment
Real estate exposure?	Yes	Yes
Diversified exposure?	Yes	Partially / No
Investment horizon	Perpetuity	Usually 5-7 years
Asset/segment rotation	Yes, to change from one asset type/segment to another can be done inexpensive and quickly	No, it is both expensive and long processes rotate the asset base
Dividend?	Yes, reinvested	Yes, usually paid out to the investor
General market risk	Yes, daily priced in the share prices	Yes, but only visible when an asset is acquired or sold in the market
Risk / reward	Lower, due to broader diversification	Higher, due to higher concentration
Liquidity	Open-ended, monthly liquidity, no entry- or exit-fees	Closed-end, illiquid second-hand market, high transaction fees
Transparency	High transparency, monthly reporting and daily pricing	Low transparency, quarterly reporting and pricing
Performance fees?	Yes, based on relative performance vs a relevant index	Yes, based on a fixed annual hurdle, usually between 6-8%

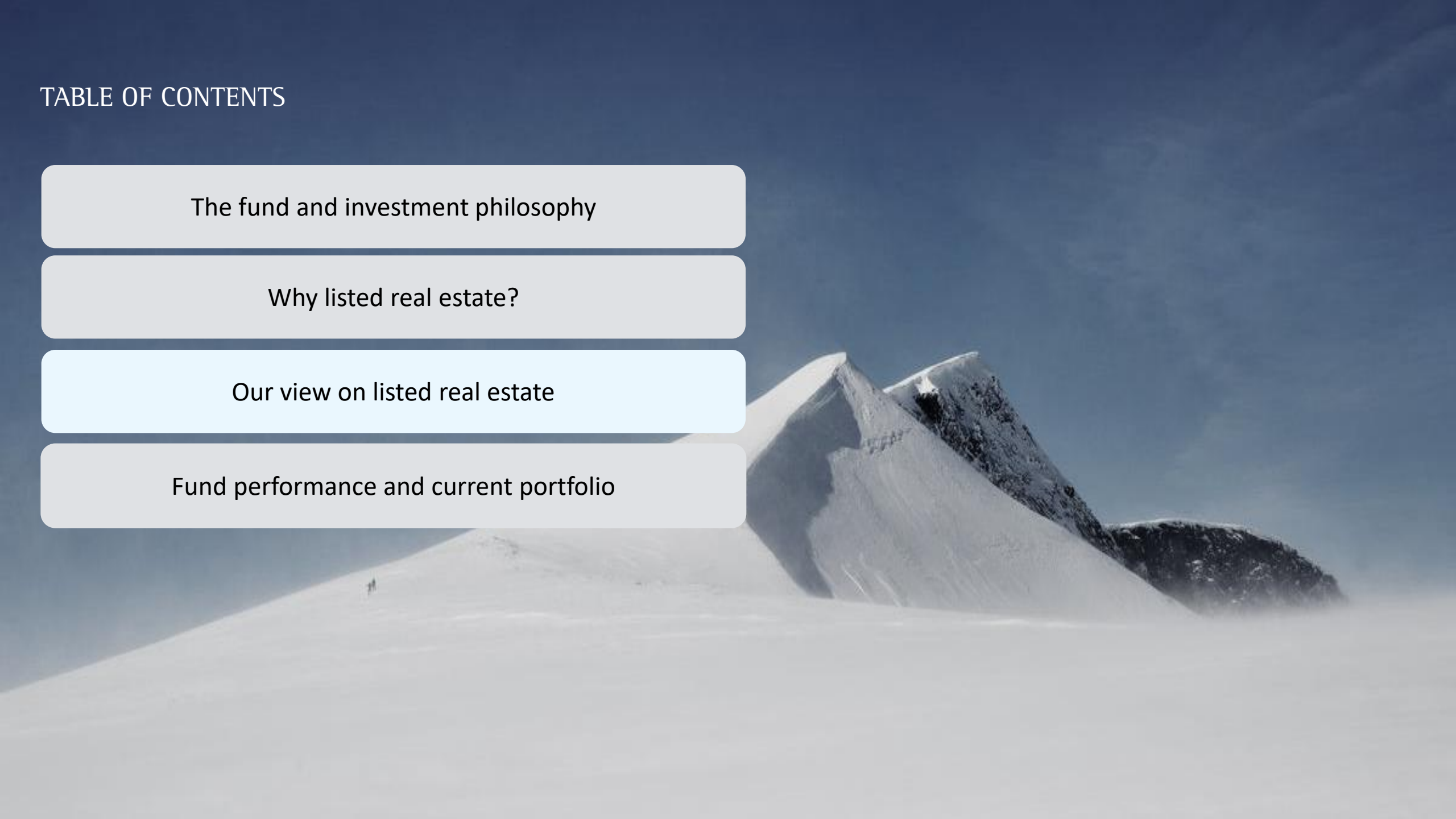
TABLE OF CONTENTS

The fund and investment philosophy

Why listed real estate?

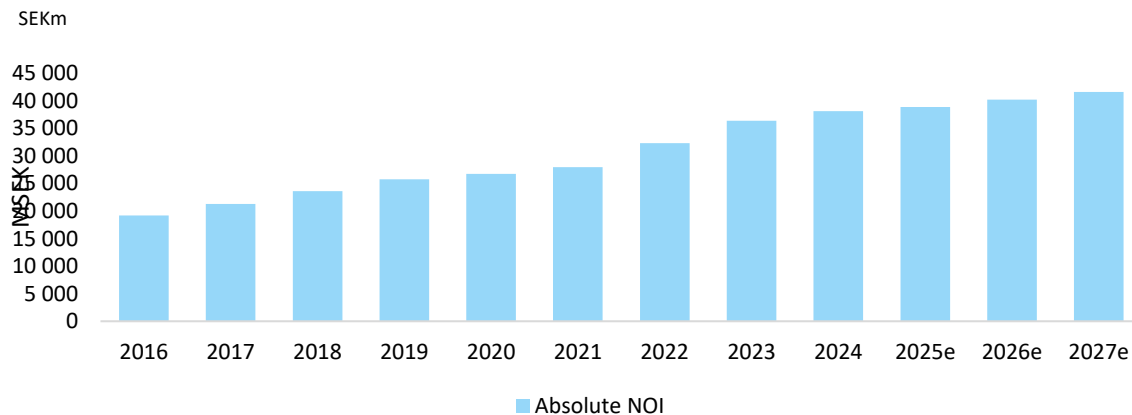
Our view on listed real estate

Fund performance and current portfolio

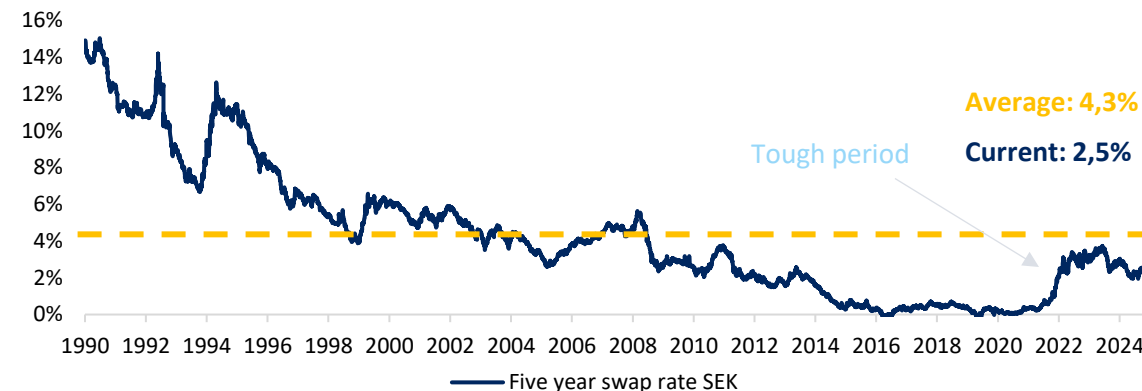


LONG TERM TREND LOOKS SOLID FOR LISTED REAL ESTATE

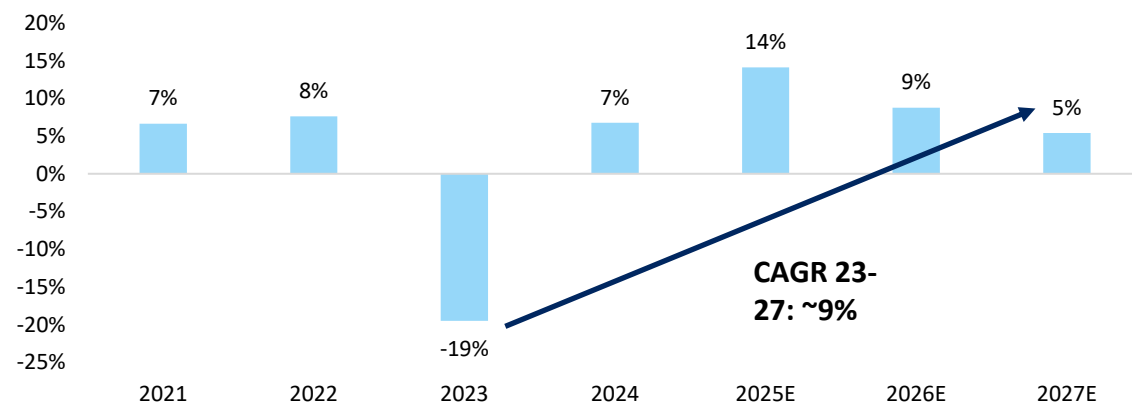
Operating income on all time high¹



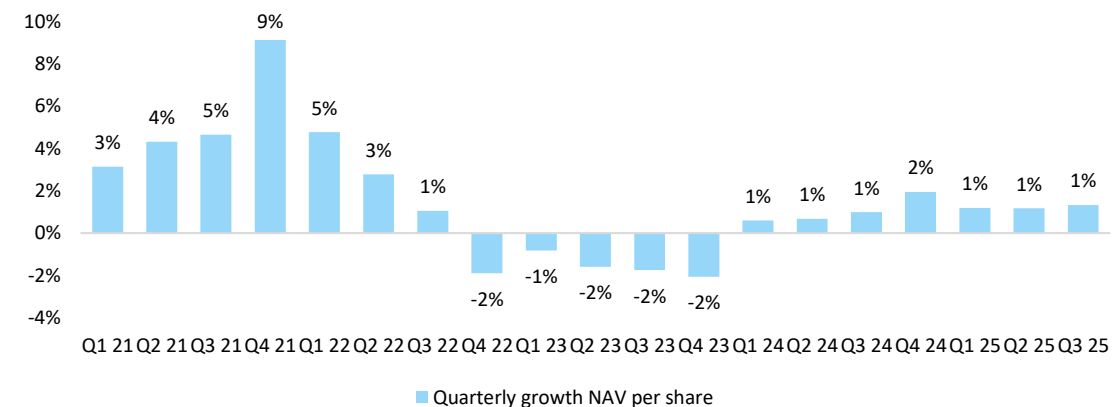
Lower interest rates and record low credit margins²



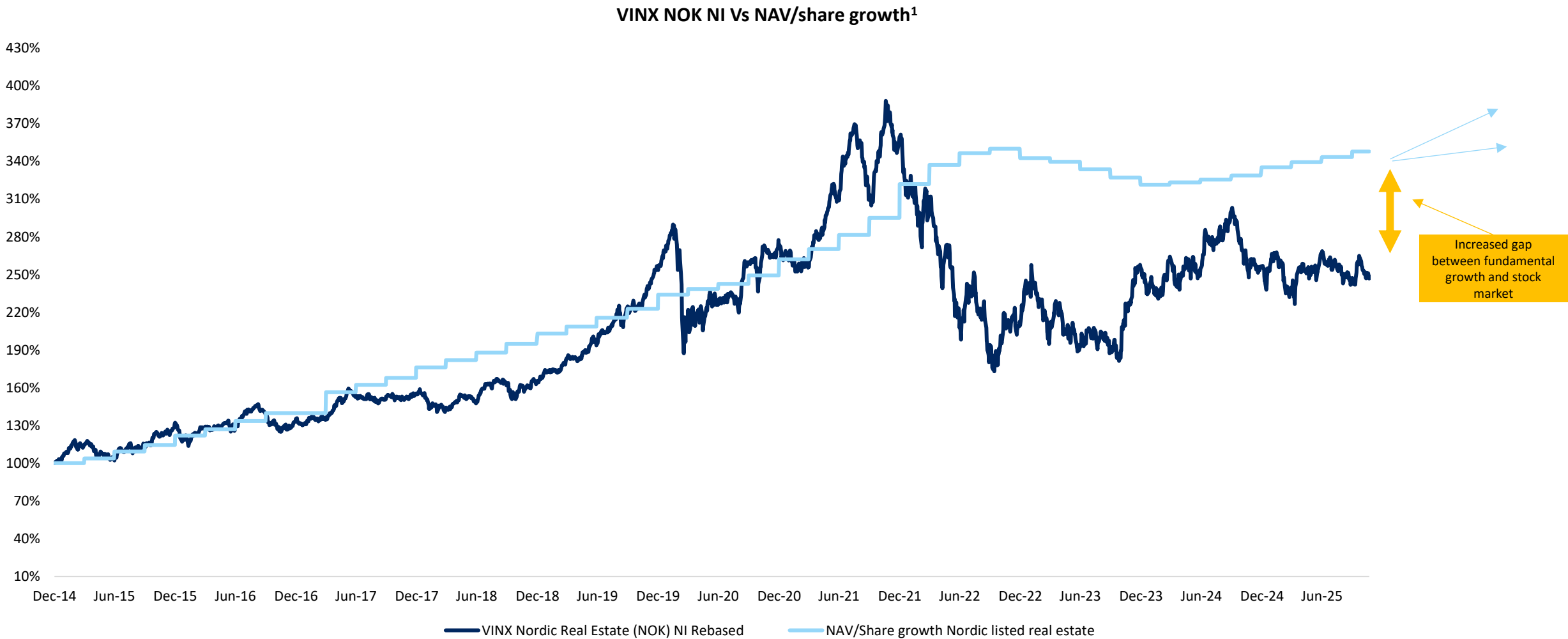
Cash flow per share on the rise³



Stable and growing net asset values⁴

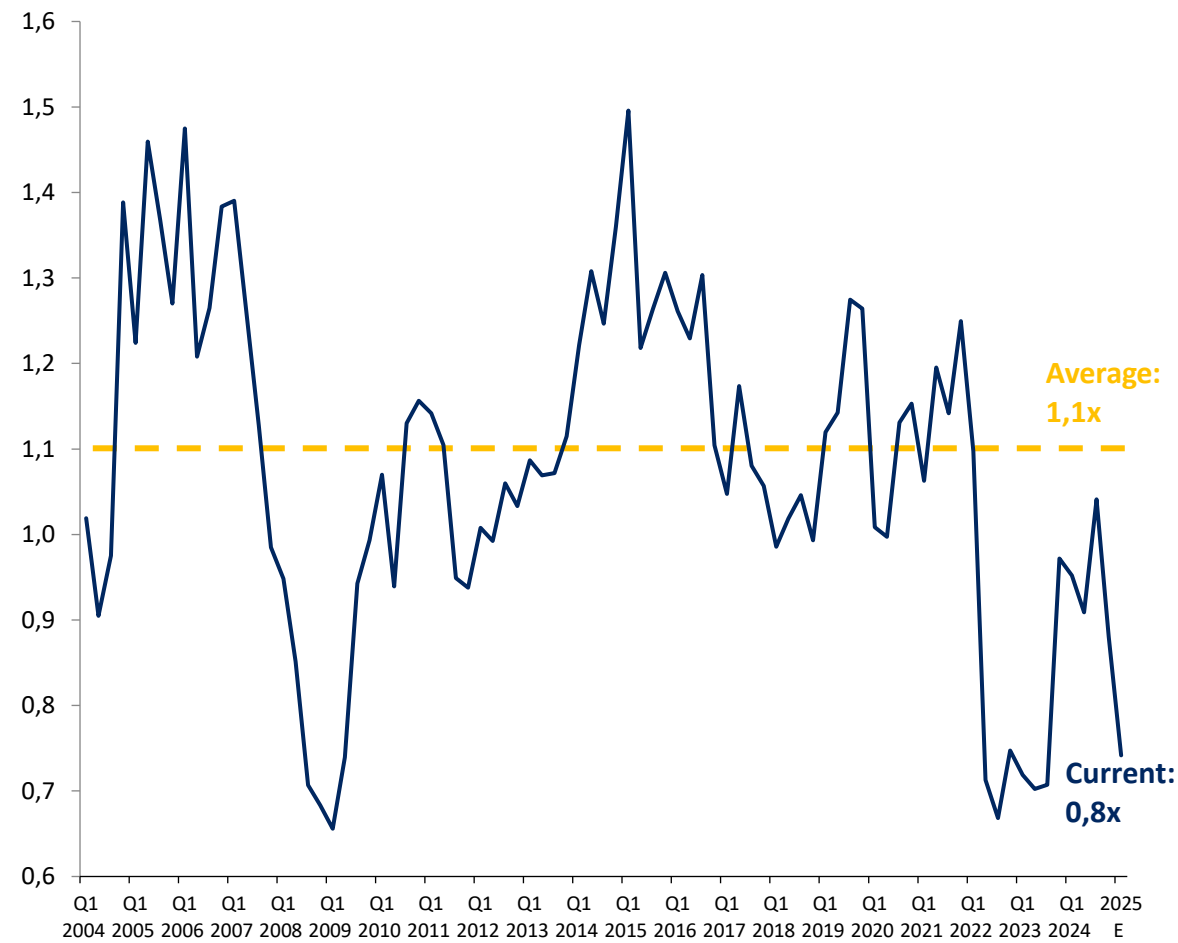


BACKDROP: MACRODRIVEN SHAREPRICES, BUT STABLE UNDERLYING GROWTH IN NET ASSET VALUE

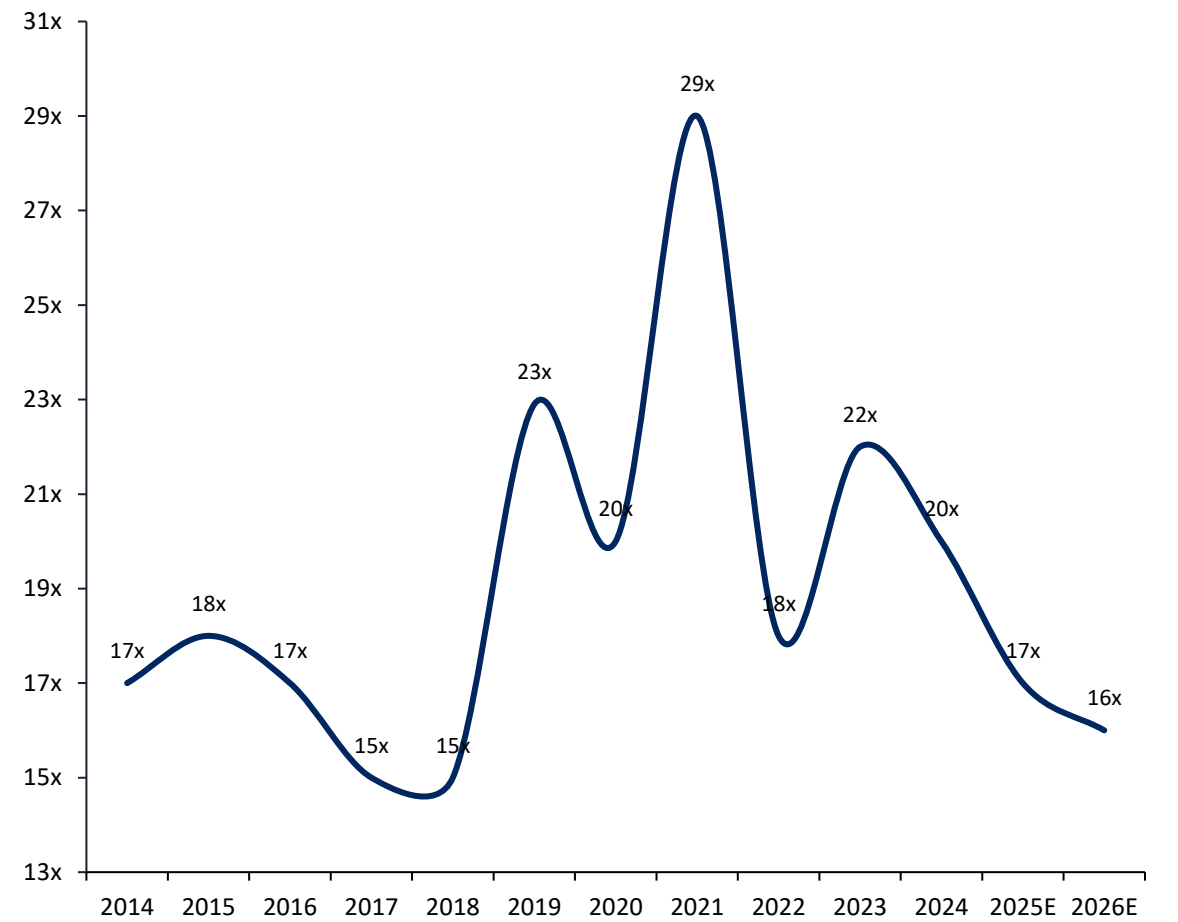


ATTRACTIVE PRICING IN AN HISTORICAL PERSPECTIVE

Price/Book¹



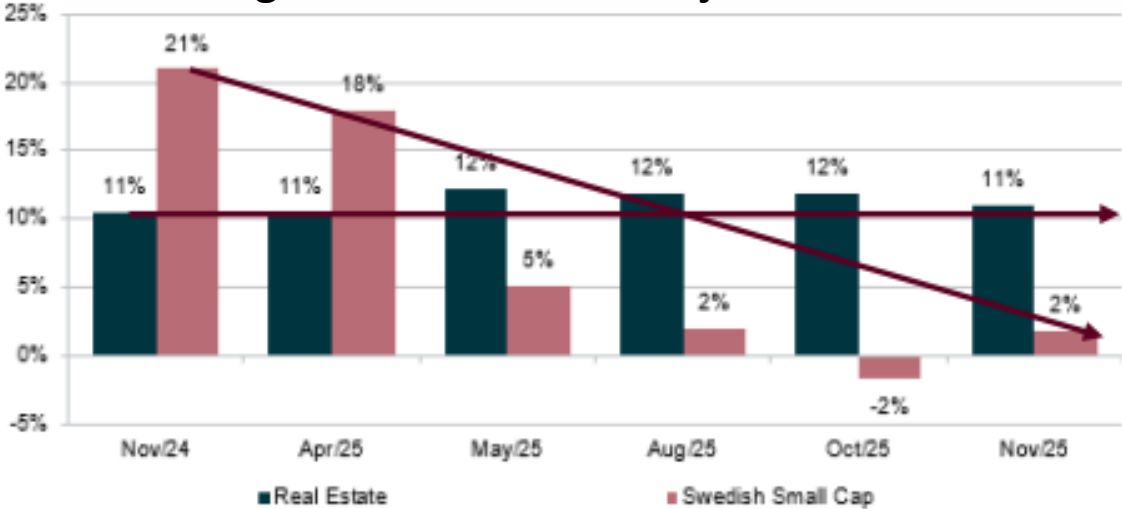
Price/Cash earnings²



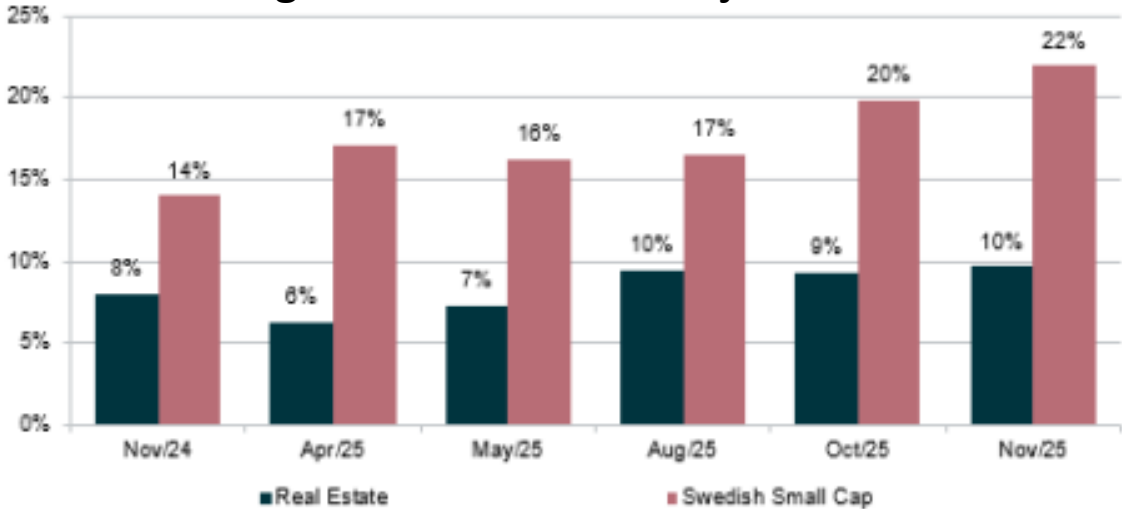
A STABLE SECTOR PROVIDES RELIABLE ESTIMATES

2025-26 consensus estimates for real estate and Swedish small cap

YoY growth in CEPS and adj EPS - 2025E

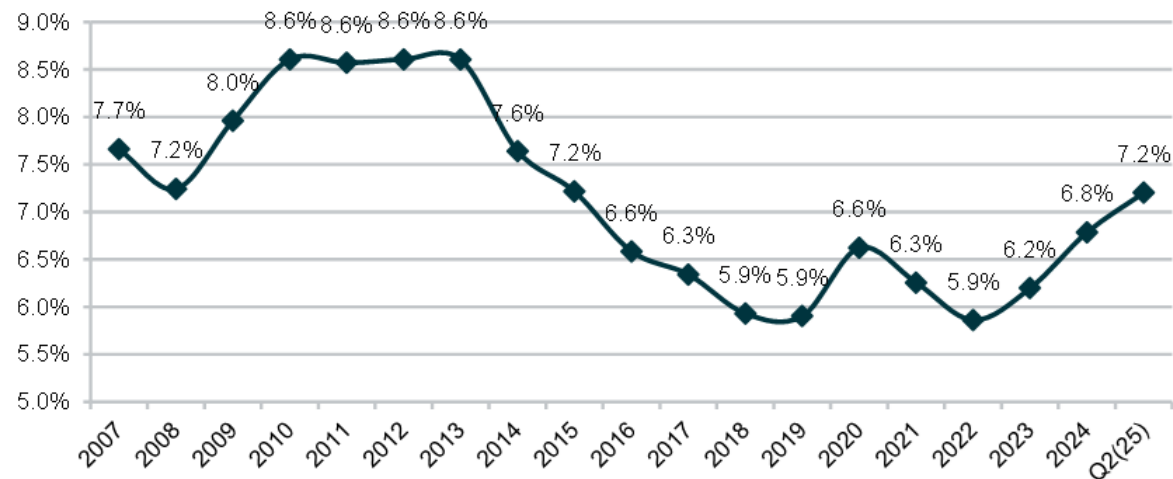


YoY growth in CEPS and adj EPS - 2026E



VACANCIES UNDRAMATIC

Average vacancy rate for the real estate sector



Vacancy rates for subsectors

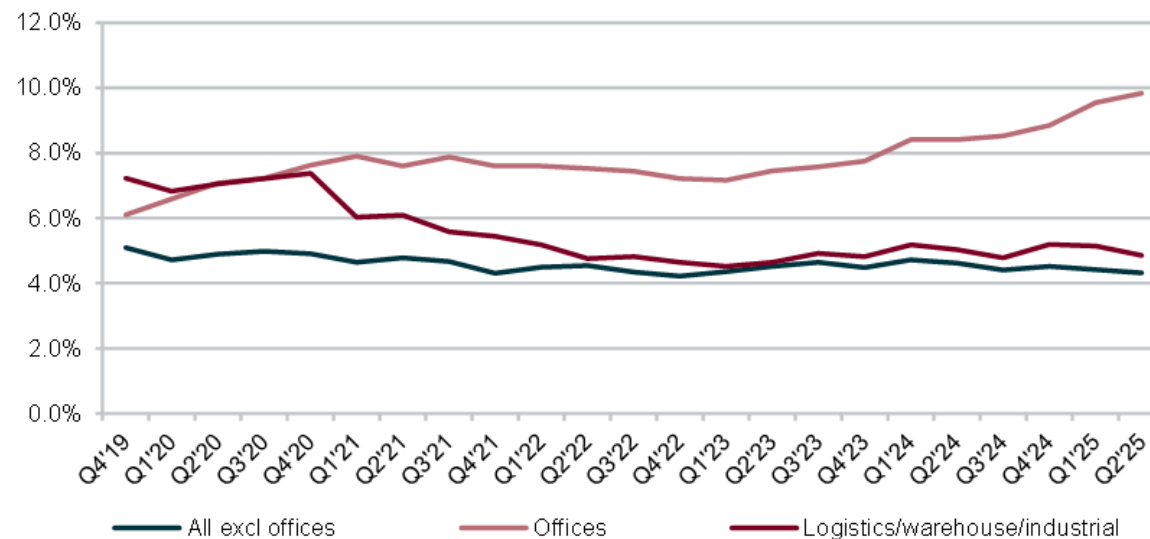


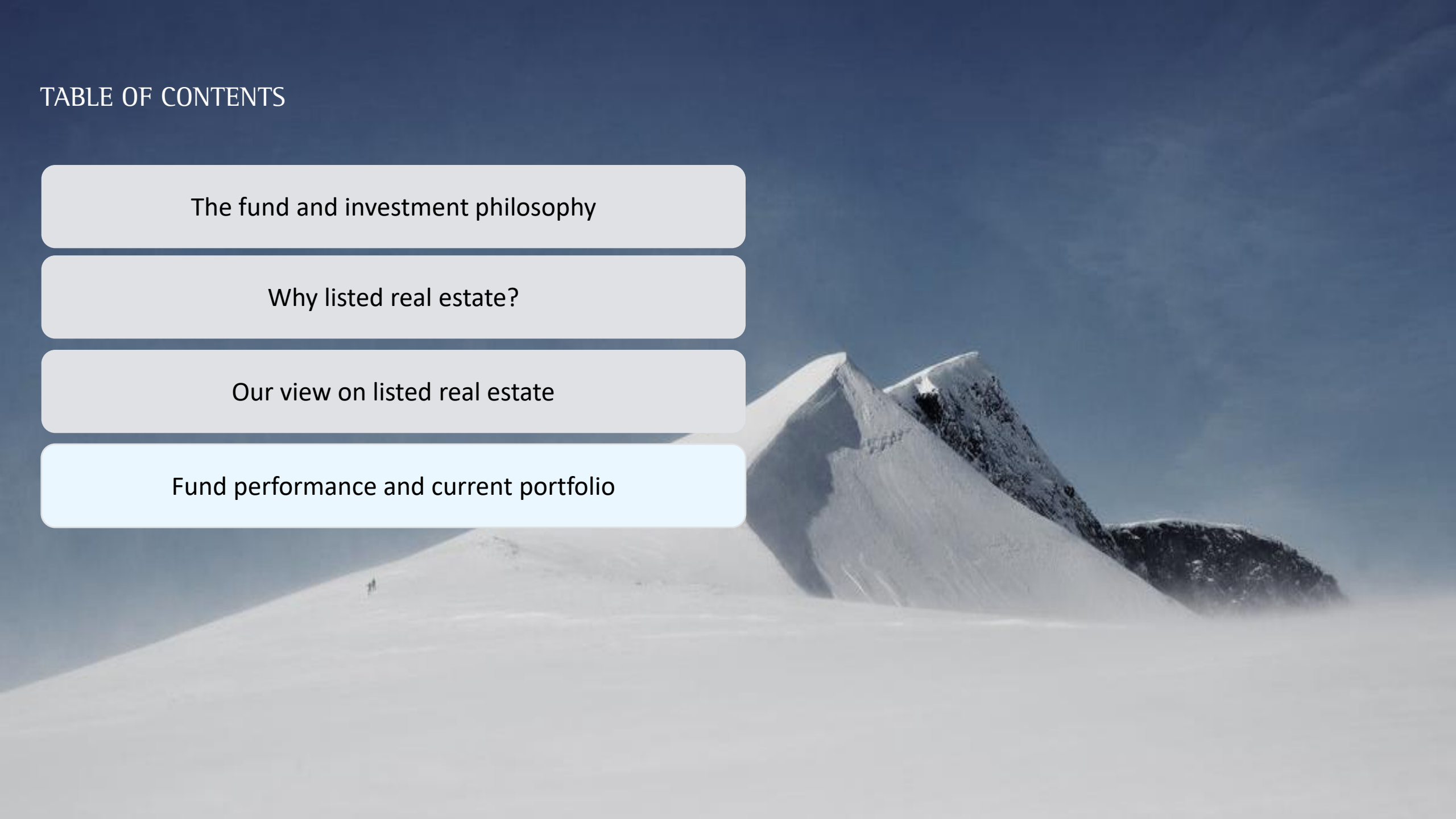
TABLE OF CONTENTS

The fund and investment philosophy

Why listed real estate?

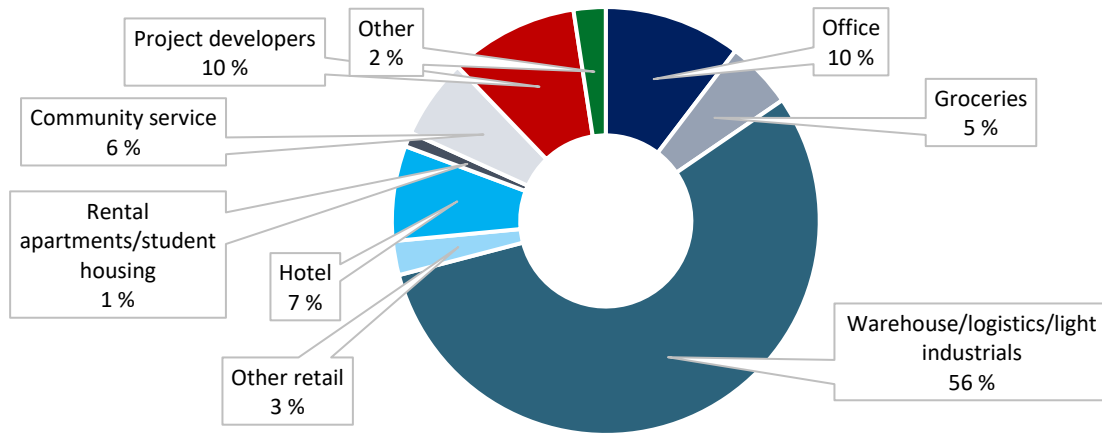
Our view on listed real estate

Fund performance and current portfolio

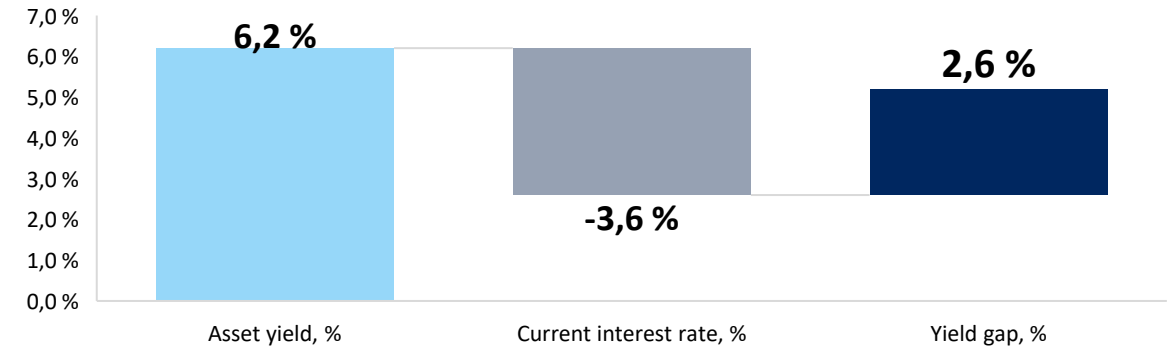


PORTFOLIO OVERVIEW: HIGH CASH FLOW, STABLE FINANCING AND CLEAR GROWTH PROSPECTS

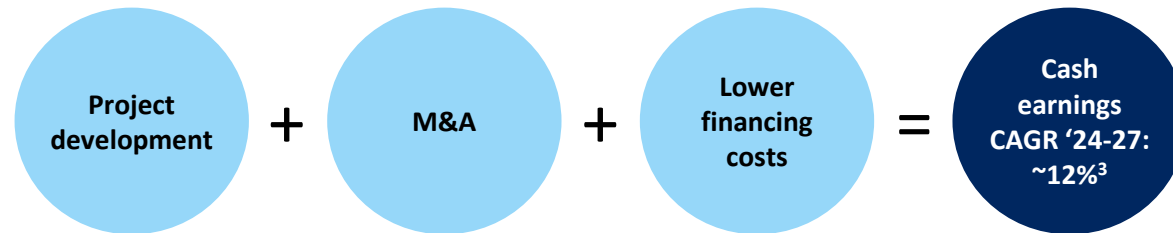
Focus on high yielding property segments... ¹⁾



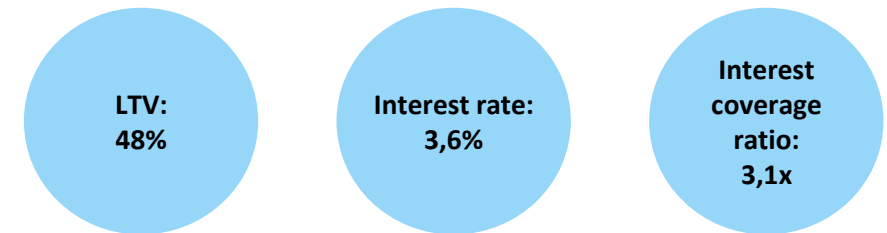
...With attractive cash flow generation²...



...Coupled with growth prospects...

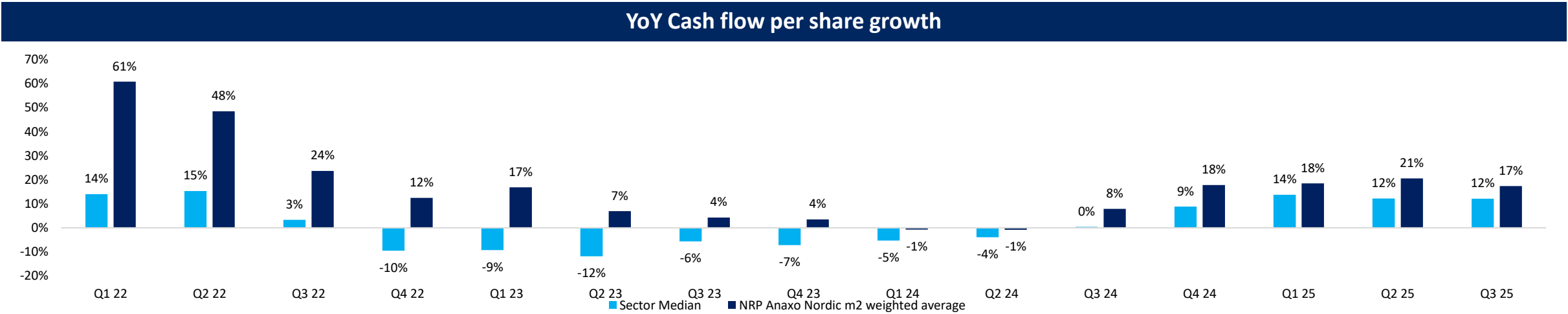
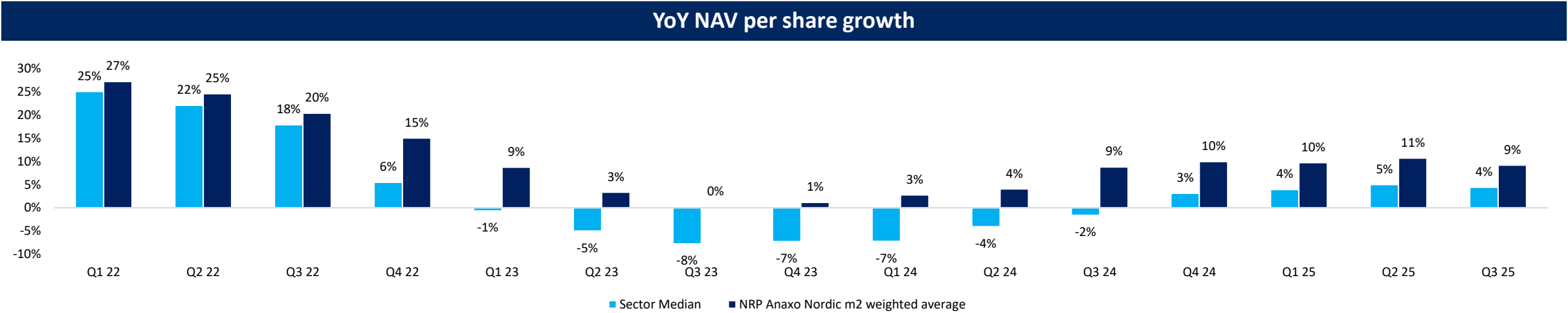


...And stable financing²



¹⁾ The numbers are indicative and are based on information disclosed by the companies in the portfolio. The definitions are not always fully comparable ²⁾ For the average company in the portfolio. Source: Company data disclosed in the Q2 earnings reports 2025

NRP ANAXO NORDIC M2 OUTPERFORMS THE SECTOR



PEFORMANCE NRP ANAXO NORDIC M2 (NOK)

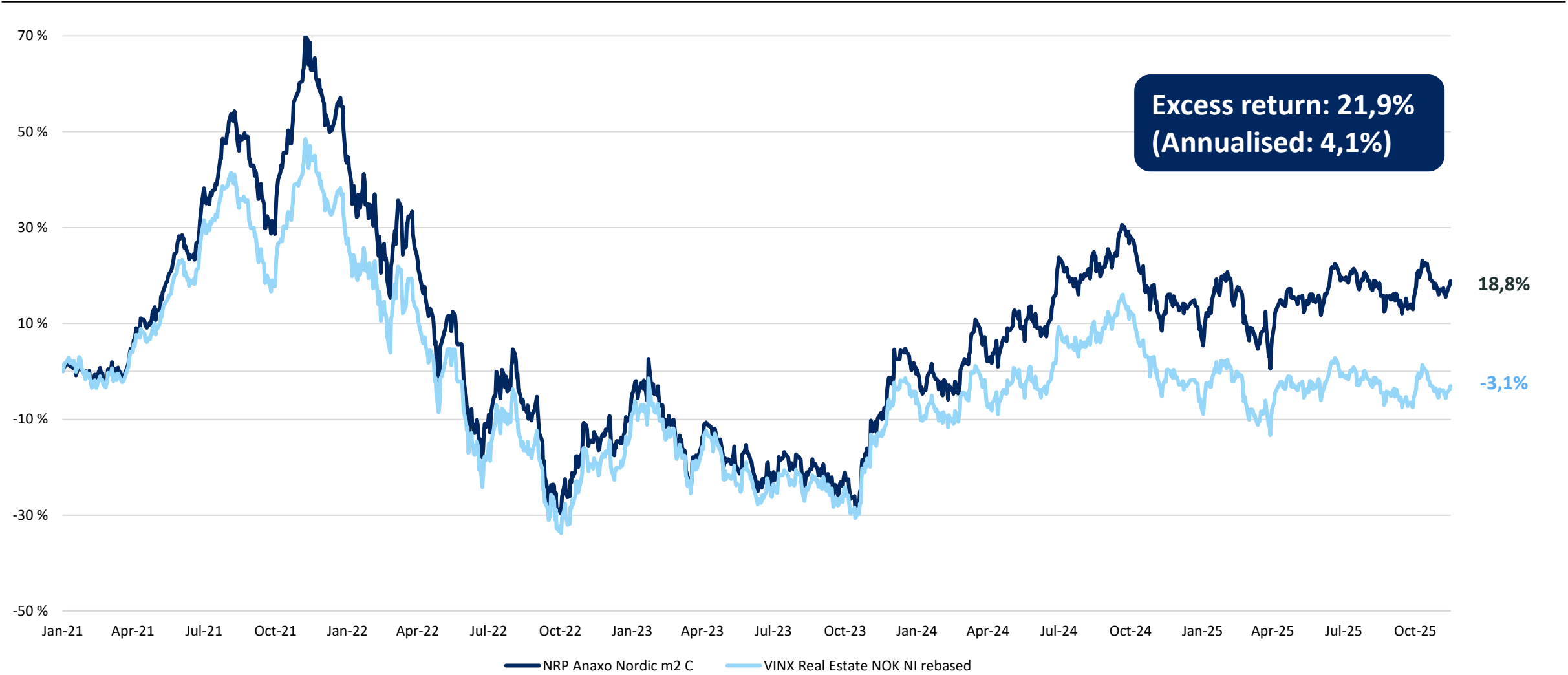
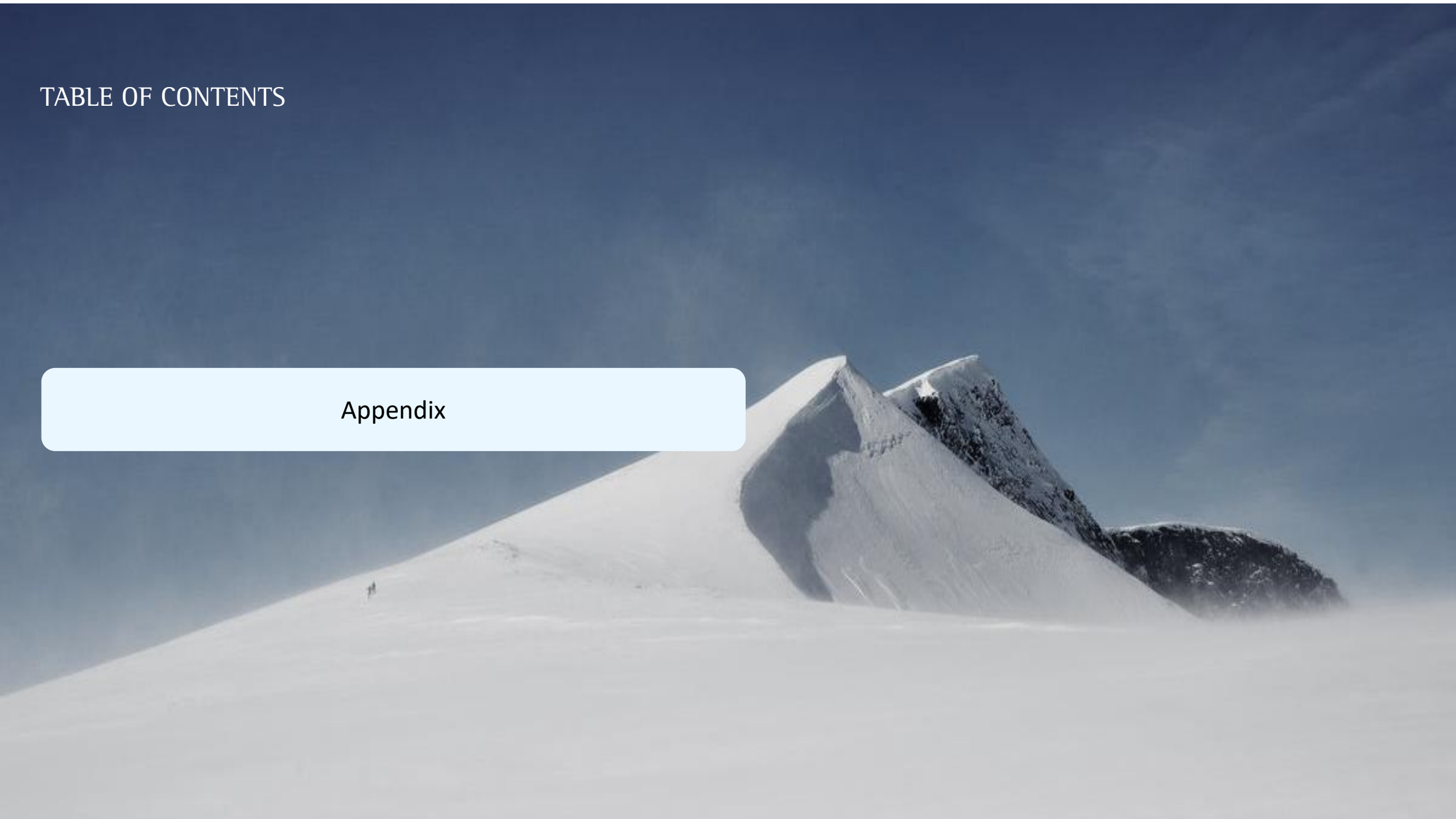


TABLE OF CONTENTS

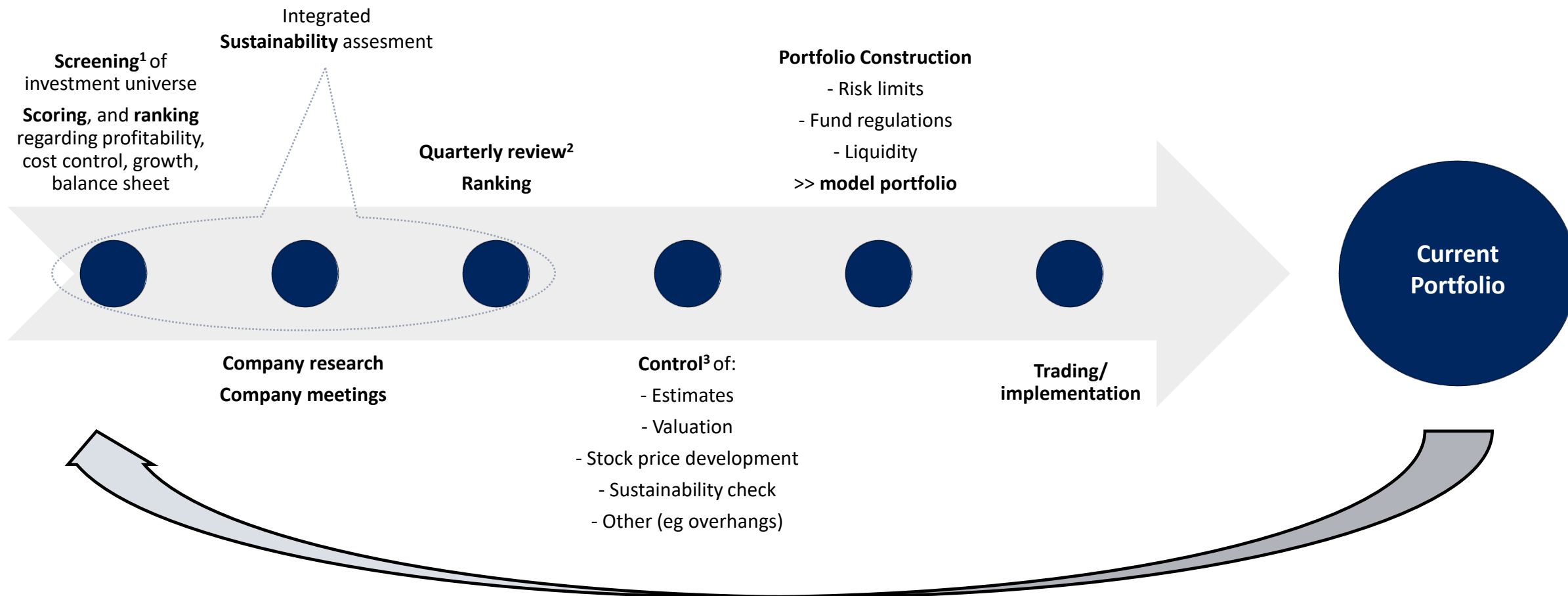
Appendix



KEY FUND TERMS

Fund name	NRP Anaxo Nordic m2
Legal structure	Open-ended Alternative Investment Fund (AIF) and Norwegian domestic fund (Nasjonalt fond)
Investment mandate	Listed Nordic real estate shares, pre-IPO investments, deposits in credit institutions, derivatives, securities fund units (ETFs)
Allocation guidelines	<ul style="list-style-type: none"> - Up to 100% in listed Nordic real estate companies - Max. 20% in real estate securities domiciled in other European countries - Up to 20% in non-listed companies with firm intentions of going public within 12 months - Max. 10% of the Fund invested in a single company - Max. ownership of 20% of share or voting capital
Geographic focus	Nordics, Europe
Target investors	Professional investors in Norway and Sweden, non-professional Norwegian investors
Share classes	6 share classes; A (NOK), B (SEK), C (NOK), D (SEK), E (NOK) and F (SEK)
Currency	Norwegian kroner (NOK), Swedish kroner (SEK)
Hedging	No hedging
Leverage	No leverage
Distributions	No distributions
Minimum subscription	A (NOK) / B (SEK) 2 000 000 C (NOK) / D (SEK) 10 000 000 E (NOK) / F (SEK) 40 000 000
Subscriptions	Monthly
Subscription fee	None
Annual management fee	Max. 1,50% for A (NOK) and B (SEK) Max. 1,00% for C (NOK) and D (SEK) Max. 0,60% for E (NOK) and F (SEK)
Performance fee	In case of a percentual development in value superior to that of the Index, the Manager will charge 20% of the difference in performance. In case of a percentual development in value inferior to that of the Index, the Manager will calculate a negative performance fee. The negative fee will not be included in the NAV but will be transferred to the next calculation. The Manager must recover performance below the Index before charging a performance fee. Note that a performance fee will be charged even if the NAV decreases, provided that the Fund performance is superior to the Index.
Index	VINX Real Estate NOK NI for A (NOK), C (NOK) and E (NOK). VINX Real Estate SEK NI for B (SEK), D (SEK) and F (SEK). The index is adjusted for dividends.
Redemptions	Monthly
Redemption fee	Redemptions can be made free of charge if made in accordance with the one-month notice period. Redemptions notices given less than 1 month from to the Date of Redemption will be charged 1,0%.
Fund Manager	NRP Anaxo Management AS
Depositary	DNB Bank ASA
Business Manager	NRP Business Management AS
Distributor	NRP Project Finance AS

INVESTMENT PROCESS



Notes: 1) Based on Bloomberg data. 2) Based on quarterly company reports. 3) Based on Bloomberg data and collected figures from external analysts

CASE STUDY: SWEDISH LOGISTIC PROPERTY

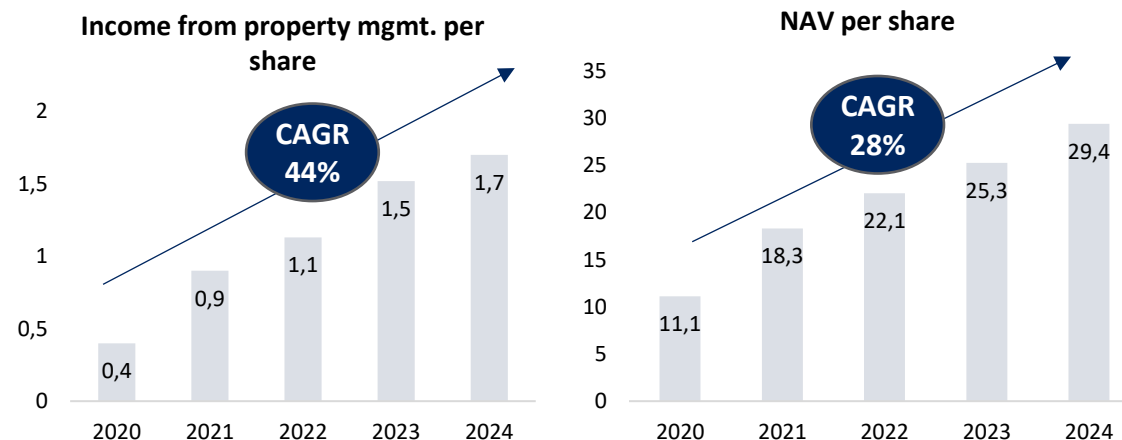
Investment highlights

- High yielding assets with development potential
 - Yield gap of ca 2,0%
- Clear growth plan and transparent business model
 - Geographical and segment concentration
- Experienced management team with track record of creating shareholder value
- Strong balance sheet, enabling growth regardless of the current interest rate environment
 - LTV under 50%
 - High cash flow generation ensures an interest coverage ratio of >3x

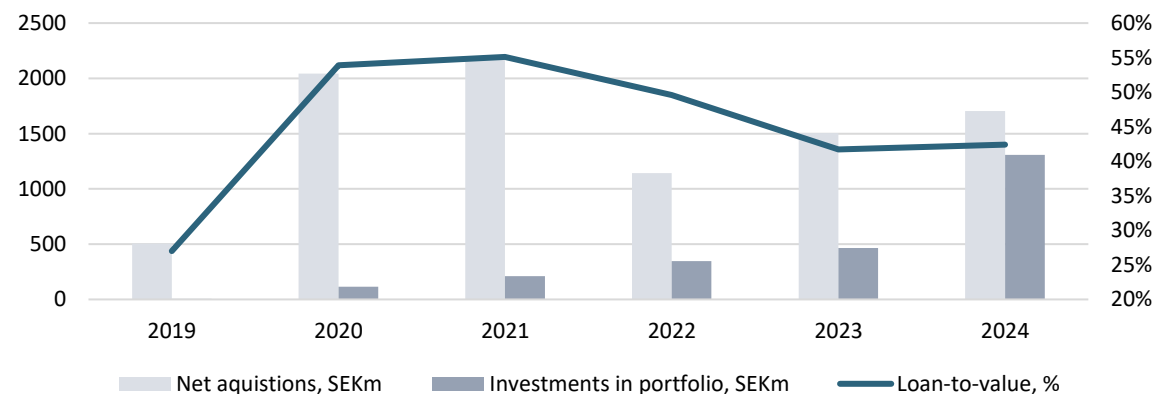


SLP

Strong track record of value creating growth...



...While maintaining a solid balance and loan-to-value ratio



CHANGING DEMOGRAPHICS AND TRADE PATTERNS

Headwinds

Slower population growth

Aging population

Tailwinds

General

- ☐ Urbanisation
- ☐ Land scarcity driven by bureaucracy
- ☐ Changes in demand structures more important than demography

Residentials

- ☐ Need for homes for elderly care
- ☐ Elderly people stays longer in their homes
- ☐ Supply shortage caused by smaller households

Commercial space

- ☐ Reindustrialization and «on shoring» creates demand for logistic space
- ☐ Land use conversion creates decreasing supply
- ☐ Increased demand for grade A offices

RISK FACTORS (1/2)

Investments in NRP Anaxo Nordic m2, hereinafter referred to as the “Fund,” is associated with various risks. Investments in securities, limited partnerships and financial instruments are also associated with risks. The risks relate to the development and fluctuations in the financial markets in general and the developments and fluctuations in the real estate market in particular. Investors intending to subscribe for shares in the Fund must be aware of the risk of losing part of or the whole invested amount. The value of the investment will fluctuate with the developments in the real estate sector, global economic growth, interest rate levels and currency volatility. Historical returns and past performance should not be considered guarantees for future returns, and NRP Anaxo Management AS (the “Fund Manager”) or any of its affiliates cannot guarantee the value of the investment going forward.

A number of risk factors may adversely affect the Fund. In the following section a selection of the various risk elements that are considered particularly relevant for NRP Anaxo Nordic m2, and the investments in the securities that the Fund will make, hereinafter referred to as the “Investments”, are presented. The description is not exhaustive, and factors not discussed may have an impact on the evaluation of the risks associated with an investment in the Fund. Additional risks not presently known to the Fund or that the Fund deems immaterial may also affect the Fund and/or the Investments.

Prospective investors should carefully consider each of the following risk factors and other information contained in this document and perform a separate evaluation before making an investment decision, including consulting independent advisors with respect to the legal, tax, and other aspects of an investment in the Fund.

The organization and order of risks listed below must not be interpreted as the Fund Manager's measure of importance or severity of the different risk issues. All risks are different both as to the origin of the risk and as to the methods of which the risk may be mitigated. Also, some risks are mitigated by the Fund and the Investments, while other risks rest on the individual investors and must be mitigated by other entities than the Fund and the Investments.

Investments in securities carry certain elements of risks. If you do not understand the underlying risks, we strongly recommend you not to invest in this Fund. If any of the risks materialize, the price of the shares may decline, and investors could lose all or part of their invested capital. The Fund will implement a draft Risk Policy which will be approved by the board and monitored by the Fund Manager's Risk Management function during the Fund's lifetime.

Investing in the Fund may include, but is **not** limited to, the following risks:

Market risk: Loss of market values as a result of fluctuations in value. Macroeconomic fluctuations, exchange rate volatility, business cycle developments, interest rate movements, changes in unemployment etc.

Liquidity risk: The risk of the Fund not being able to redeem shares within a normal settlement period. The risk of the Fund and the Investors having to accept realization of losses.

Credit risk: The value of the Fund may be affected by the creditworthiness of the companies that have issued the securities that the Fund has invested in.

Operational risk: The risk of direct or indirect losses due to insufficient or failing internal processes. Risk of the fund closing down ahead of schedule, resulting in realization of losses.

Management risk: Risk of fund performance below the index due to deviations from the index weighting and composition. Risk of reduced returns due to ineffective management on the portfolio company or management company level, financial, ethical or otherwise.

Other risks: Environmental risk, political risk, legislative and regulatory changes, tax risk, force majeure, counterparty risk.

Market risk

Market risk is the risk of losses in market values for the portfolio's financial instruments due to fluctuations in value. Market risk comprises macroeconomic fluctuations, such as interest rate movements, exchange rate volatility, business cycle developments and changes in the unemployment rate. Investing in the Fund is associated with such risks, and changes in market conditions can result in adverse price movements which may have a negative impact on the value of the Investments. Investing in the Fund may be particularly affected by exchange rate volatility as a significant share of the investments can be made abroad. Hence, changes in the exchange rates may significantly impact the value of the Fund.

Interest rate risk comprises the risk of the value of interest-bearing securities fluctuating in value as a result of changing interest rates. If the interest rate increases, the value of the investments in interest-bearing securities will decline (and vice versa).

Currency risk comprises the risk of losses due to exchange rate volatility. The degree of currency risk is dependent on the Fund's exposure to securities denominated in another currency than the Norwegian krone, the geographical diversification of the portfolio and hedging exposure.

RISK FACTORS (2/2)

Liquidity risk

Liquidity risk comprises the risk of the Fund not being able to redeem shares within a normal settlement period due to reduced share turnover. A normal settlement period for securities funds is 2 -3 days, corresponding to the same settlement period applicable to private investors. Liquidity risk can also be associated with the risk of the Fund declining in value e. g. due to sale of securities as a result of net redemptions in the Fund. Thus, the Manager is unable to sell the securities at the price of their valuation in the Fund's accounts.

Liquidity risk can be observed on the Fund level, on the Investment level and on the Investor level. Regarding liquidity risk on the Fund and Investor level, Investors are advised that the Fund has quarterly redemptions.

Credit risk

Credit risk comprises the risk of the Fund value being affected by the creditworthiness of the companies that have issued the securities that the Fund has invested in, e. g. due to increased risk of bankruptcy for the companies that have issued the securities. Furthermore, the companies' creditors may have unlimited access to increasing the interest rate and margin levels. The Manager cannot leverage the Fund.

Operational risk

Operational risk comprises the risk of direct or indirect losses due to insufficient or failing internal processes, including but not limited to internal errors, breaches, interruption and damages, both intentional and unintentional. Operational risks may be caused by man-made actions, system failure, organizational structure, regulation and legislation etc. and exist on both the Fund level and the Investment level.

If the Fund is shut down ahead of schedule, the capital will be returned to the Investors earlier than expected, which may result in realization of losses. Operational risks can also have an effect on the balance sheet and income statements of the portfolio companies, and thus may affect the overall return on the Investments.

Management risk

Investing in the Fund can be associated with management risk. The Investments made by the investment manager may provide lower returns than the relevant reference index.

Investing in the Fund is also associated with management risk on the portfolio company level. Management in the listed companies may pose a risk (financial, ethical or otherwise) of negatively affecting returns.

Other risks

Other risks and events may affect the value of the Fund and the Investments. These may include, but are not limited to, environmental risk, political risk, legislative and regulatory changes, tax risks, force majeure and risks related to dependence on external counterparties.

Environmental risk and climate change may affect company earnings and portfolio returns over time.

Political risk may impact the Fund, the portfolio companies and the investors. Political decisions, events and conditions can influence profitability and growth.

Tax risk and risk of adjustments to the tax rates applicable to the Fund and the portfolio companies may affect portfolio returns.

Legislative and regulatory risk may impact Fund performance in terms of new legislation affecting the portfolio companies, the Fund itself and the investors.

Risk related to external counterparties comprises the risk of a broker, deposit bank or other fund counterparties going bankrupt or becoming unable to fulfill their contractual obligations. Total potential losses are calculated as the sum of the aggregate exposure towards the relevant counterparty, considering all Group units if this is relevant. The relative counterparty risk will be dependent on whether or not the fund uses derivatives, counterparty credit rating, hedging against counterparty risk, the size of the exposure, OTC trading etc. Furthermore, the fund may be exposed to counterparty risk in markets without DVP.